

USZ model range - 4-in-1 all-steel screw clamp with toggle handle

- ▶ quenched and tempered single-piece sliding and fixed brackets for resilient and elastic clamping
- ▶ Single-piece fixed bracket and pressure plate, quenched and tempered, torsion-stiff
- ▶ For clamping, pipe clamping, spreading and clamping around edges
- ▶ Scope of supply includes V clamping set for pipes and additional block for clamping around edges
- ▶ Easy-action surface-coated spindle with trapezoid thread avoids tilting
- ▶ Best in class force transfer during clamping due to rounded edges on the locking handle
- ▶ Fast conversion of the sliding bracket for spreading applications by inverting the clamping rail and the additional block
- ▶ For use with wood and steel



Incl. exchangeable V clamping set and additional block for clamping round bends and spreading

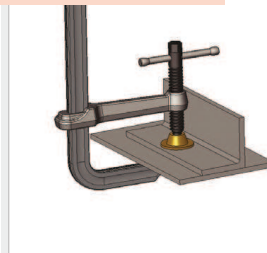
Accessories



Magnetic V clamping attachment

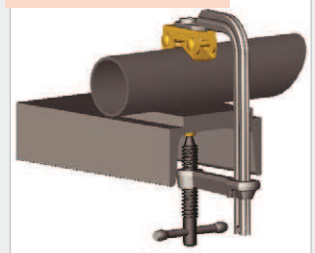
Art no. 1790006

Clamping



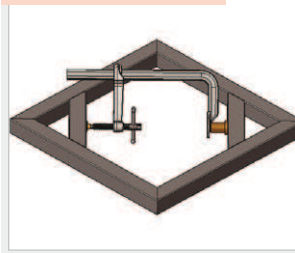
- ▶ Standard application, efficient and easy to perform

Pipe clamping



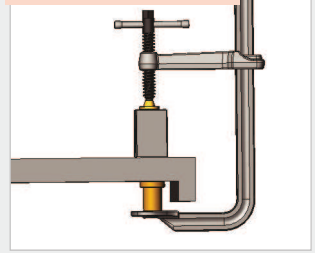
- ▶ No problem with the self-adjusting V clamping set

Spreading



- ▶ fast retooling with just a few actions

Clamping around edges



- ▶ Clamping around edges with bolt-on additional block



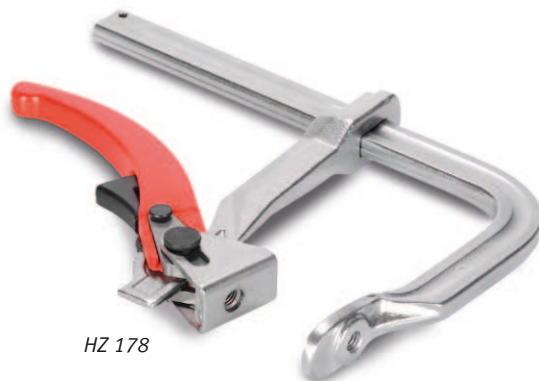
USZ 216

USZ 318

USZ 419

HZ model range - lever clamp with latching mechanism for efficient and low-vibration clamping

- ▶ Single-piece fixed bracket and pressure plate, quenched and tempered, torsion-stiff
- ▶ with 38 mm wide movable pressure plate
- ▶ Functional latching mechanism for vibration-proof clamping
- ▶ Really useful in cramped working conditions
- ▶ Fast, two-step conversion of the sliding bracket for spreading applications by inverting the clamping rail and the additional block
- ▶ Five times quicker than legacy clamps thanks to single-finger quick clamping and release lever
- ▶ For use with wood and steel



HZ 178



HZ 178 - Fig. shows the scope of delivery



HZ 254 - Fig. shows the scope of delivery

Accessories



V clamping attachment
Art no. 1790005



Magnetic V clamping attachment
Art no. 1790006



Additional block clamping around edges and spreading
Art no. 1790007

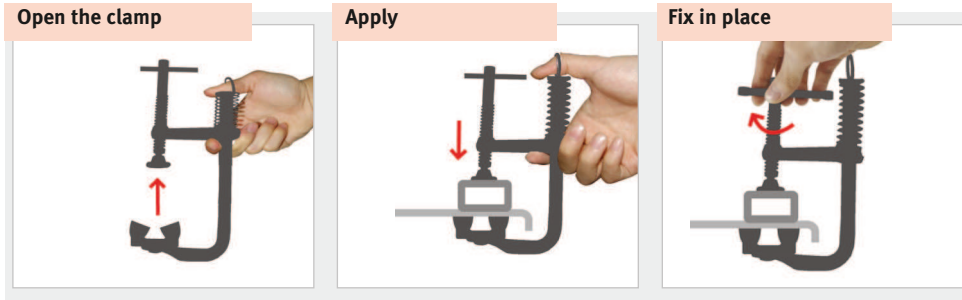
Model	max. clamping force	Span	Throat	Fixed bracket cross-section	Threading	Weight	Art. no.
USZ 216	550 kg	216 mm	121 mm	24 x 12 mm	M10	1.9 kg	1790001
USZ 318	1100 kg	318 mm	140 mm	30 x 14 mm	M10	3.5 kg	1790002
USZ 419	1100 kg	419 mm	140 mm	30 x 14 mm	M10	4.0 kg	1790003
HZ 178	460 kg	178 mm	121 mm	22 x 11 mm	M10	1.2 kg	1790010
HZ 254	460 kg	254 mm	121 mm	22 x 11 mm	M10	1.3 kg	1790011

Welding clamps

MSZ model range - magnetic screw clamp with quick-clamping spring and magnetic V clamping attachment

- ▶ for steel workpieces
- ▶ with spring-loaded sliding bracket for single-handed work
- ▶ the clamp holds the workpiece magnetically after positioning
- ▶ from quenched and tempered nickel-chrome-plated steel for a long service life
- ▶ a V clamping attachment is included in scope of supply
- ▶ with threaded hole, extensible through optional V clamping set or bolt

Easy single-handed operation in three steps:



MSZ 90 - Fig. shows scope of supply

MSZ 140 - Fig. shows scope of supply

Accessories

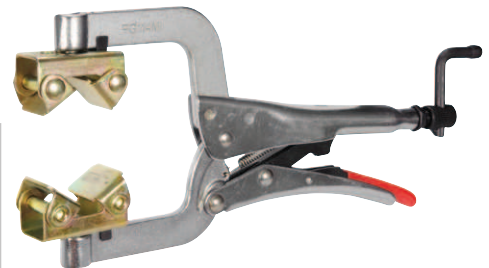
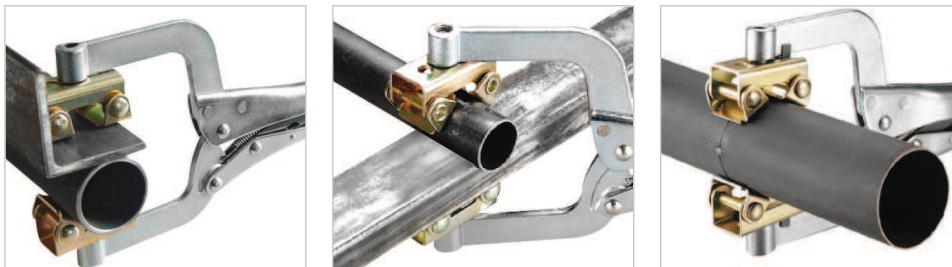


Additional block for clamping around edges
matches MSZ 140
Art no. 1790022

· suitable for RGZ 280
Art. no. 1790007

RGZ 280 – Pipe grip specially for holding round workpieces

- ▶ With two self-adjusting V clamping attachments, thus also suitable for clamping flat material onto pipes
- ▶ single-handed use



RGZ 280 - Fig. shows scope of supply, optionally available additional block for clamping around edges, see accessories above

WGZ 76 – Angle grippers - a helping hand for working with rectangular workpieces

- ▶ For holding, aligning and clamping workpieces of different thicknesses at an angle of 90°
- ▶ single-handed use
- ▶ Usable for wood and steel, as well as synthetic materials



▶ For clamping right angled joints

▶ Also suitable for working with wood and synthetic materials

▶ for workpieces up to 1 1/4 inch (32 mm) thickness (D)



WGZ 76 - Fig. shows scope of supply

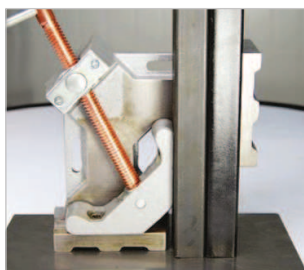
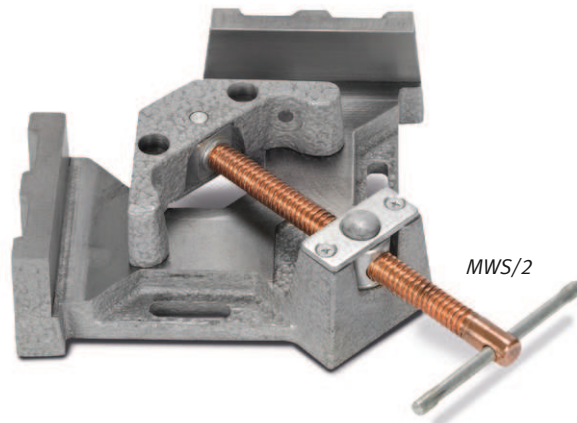
Model	max. clamping force	Span	Throat	Transverse cut	Threading	Weight	Art. no.	
MSZ 90	140 kg	90 mm	64 mm	13 x 6 mm	M6	0.4 kg	1790020	
MSZ 140	230 kg	140 mm	89 mm	16 x 8 mm	M 8	0.5 kg	1790021	
Model	Clamping width min./max.			Length	Threading	Weight	Art. no.	
RGZ 280	40 - 64 mm			280 mm	M10	1.3 kg	1790090	
Model	max. clamping force	Span	Throat	Length		Weight	Art. no.	
WGZ 76	75 kg	32 mm	76 mm	216 mm	-	0.6 kg	1790080	

MWS model range – metal angle clamp, 2-axis or 3-axis design

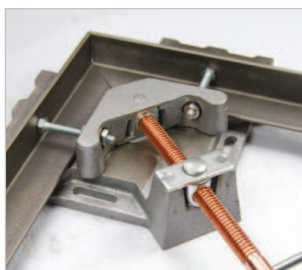
- ▶ For use in metalworking, welding and workshops
- ▶ Stable jaws and base body made of grey cast
- ▶ For holding, aligning and clamping workpieces of different thicknesses at an exact angle of 90°
- ▶ Automatic adjustment of the pressure jaw to the different workpiece thickness due to articulated-bearing spindle nut
- ▶ With pushbutton for quick clamping of the workpiece (except MWS-2 56)
- ▶ Weld spatter will not stick on the copper-plated trapezoid spindle with T handle
- ▶ Easy to mount on welding or machine tables thanks to slots at side

MWS-2 model range

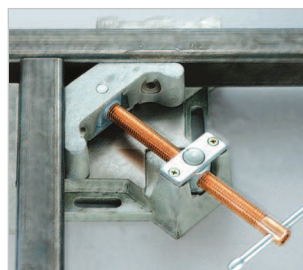
- ▶ For workpieces with two axes
- ▶ Open design makes it possible to clamp T joints and allows free access to the workpiece for welding and assembly work



▶ Milled sides for standing up the metal angle clamp



▶ With attachment for improved clamping of sections



▶ Open design makes it possible to clamp T joints



▶ Also suitable for clamping round material

MWS-3 model range

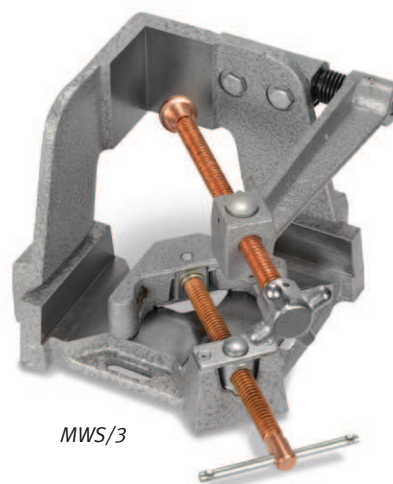
- ▶ for workpieces with three axes
- ▶ Fast removal of the workpiece simply by moving out the third clamping arm



▶ With quick clamping mechanism for fast and convenient setup (except MWS-2 56)



▶ The third clamping arm can be simply rotated out



Model	Span	Jaws length/height	T clearance	Mounting slot		Weight	Art. no.	
				Length	Width			
MWS-2 56	56 mm	90 x 33 mm	47 mm	35.5 mm	11 mm	4.0 kg	1790099	
MWS-2 95	95 mm	122 x 35 mm	62 mm	40 mm	11 mm	5.0 kg	1790100	
MWS-2 121	121 mm	135 x 64 mm	100 mm	51 mm	11 mm	10.6 kg	1790101	
MWS-3 95	95 mm	122 x 35 mm	62 mm	–	–	11.1 kg	1790102	
MWS-3 121	121 mm	100 x 64 mm	100 mm	–	–	19.6 kg	1790103	

SWM-2 30 – Switchable welding angle magnets for fixing sheet metal, round and square workpieces or pipes

- ▶ With high magnetic holding force for professional applications
- ▶ Magnet can be switched on and off with toggle switch
- ▶ Easy to wipe down in switched-off state



For holding metal workpieces at 45° or 90° angles



Model	Holding force*	Angle	Dimensions	Weight	Art. no.
SWM-2 30	30 kg	45° / 90°	110 x 95 x 25 mm	0.5 kg	1790029

* Holding force spec. based on application with 9.5 mm steel plate

VSWM 15 – Adjustable welding angle magnet - for continuously variable angle adjustment between 30° and 270°

- ▶ With high magnetic holding force for professional applications
- ▶ Ideal for round and square tube, angled and flat material
- ▶ The desired angle can be easily set between 30° and 270° via hexagon hole
- ▶ Fastening holes to connect two magnets



Model	Holding force*	Angle	Dimensions	Weight	Art. no.
VSWM 15	15 kg	30° - 270° continuously variable	156 x 156 x 20 mm	0.9 kg	1790051

* Holding force spec. based on application with 10 mm steel plate

WM 125 – Two inside and outside angle magnets for 90° and 270° angles

- ▶ With high magnetic holding force for professional applications
- ▶ Ideal for round and square tube, angled and flat material
- ▶ Fastening holes to connect two magnets



Hexagon hole for releasing the magnetic bracket

Scope of supply WM 125:

- 1 angle magnet up to 9 kg holding force
- 1 angle magnet up to 15 kg holding force

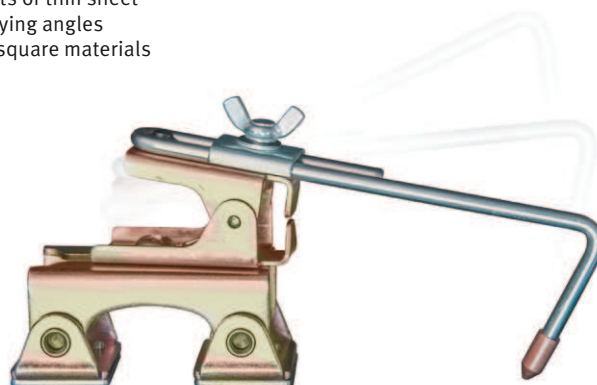
Model	Holding force*	Angle	Dimensions	Weight	Art. no.
WM 125	9 kg 15 kg	90° / 270°	75.5 x 52 x 14 mm 125 x 85 x 18 mm	0.5 kg	1790042

* Holding force spec. based on application with 10 mm steel plate



MHS 203 – material holding stop

- ▶ For holding, positioning and machining steel workpieces
- ▶ Holding rod with brass tip 360°, length adjustable
- ▶ Perfectly suited for nuts, bolts or thin sheet metal for tack welding at varying angles
- ▶ For use with round, flat and square materials in low-load applications



Model	Holding force*	Angle	Dimensions	Weight	Art. no.
MHS 203	15 kg	–	178 x 102 x 102 mm	0.55 kg	1790077

* Holding force spec. based on application with 10 mm steel plate

BHW 100 – TIG torch holder

- ▶ Put down the welding torch wherever you need it right now
- ▶ Adjustable cable holder
- ▶ The fully enclosed magnetic baseplate facilitates cleaning of metal residues



Model	Holding force*	Angle	Dimensions	Weight	Art. no.
BHW 100	–	–	Ø 89 x 160 mm	0.85 kg	1790078

* Holding force spec. based on application with 10 mm steel plate

UGZ Series – Universal grip pliers

- ▶ Crank for fast opening, closing and adjustment
- ▶ With quick release lever
- ▶ Toothed jaws for additional grip
- UGZ 40**
 - ▶ With hammer head and longitudinal groove in upper jaw
 - ▶ Hard-soldered components with excellent durability
- UGZ 75**
 - ▶ Large jaw reach (64 mm)
 - ▶ V-shaped notch in upper jaw for clamping small parts



UGZ 40



UGZ 75

Model	Throat	Opening range	Tool length	Weight	Art. no.
UGZ 40	–	40 mm	300 mm	0.6 kg	1790091
UGZ 75	64 mm	6 ~ 75 mm	250 mm	0.7 kg	1790092

* Holding force spec. based on application with 10 mm steel plate

Welding angle magnets

SWM-2 and SWM series – switchable weld angle magnets for fixing sheet metal, round and square workpieces or pipes

- ▶ With strong magnetic holding for professional applications
- ▶ Magnet can be switched on and off with toggle switch
- ▶ Easy to brush off in switched-off state
- ▶ Ideal for round and square tube, angled and flat material

SWM-2 model range



For holding metal workpieces at 45° or 90° angles

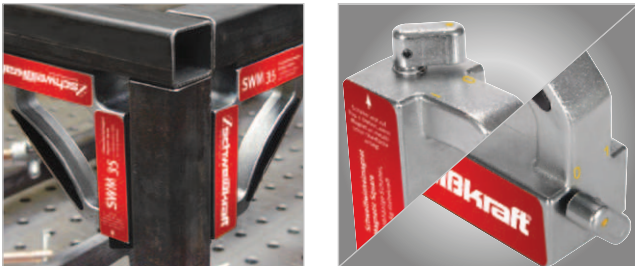


SWM-2 35

SWM-2 65

SWM model range

- ▶ For holding metal workpieces at 90° angle
- ▶ Pole piece with prism, thus suitable for flat and round material



Professional design for exacting quality requirements

Two independently acting on/off switches



SWM 35

SWM 70

VSWM series – Adjustable weld angle magnet - for continuously variable angle adjustment between 30° and 275°

- ▶ With strong magnetic holding for professional applications
- ▶ Pole piece with prism, thus suitable for flat and round material
- ▶ The desired angle can be easily set between 30° and 275° and easily held with a practical lever



Angle can be easily read off on scale

WM 90 – angle magnet

- ▶ For creating exterior 90° angles for obstacle free interior welding
- ▶ Exterior magnetic edges can be used for 60° material angle



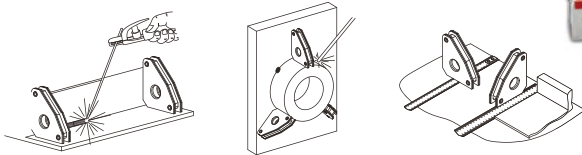
Scope of supply WM 90:
· 2 angle magnets each

Model	Holding force*	Angle	Dimensions	Weight	Art. no.	
SWM-2 35	40 kg	45° / 90°	111 x 95 x 29 mm	0.7 kg	1790030	
SWM-2 65	75 kg	45° / 90°	152 x 130 x 35 mm	1.4 kg	1790031	
SWM 35	55 kg	90°	152 x 152 x 38 mm	1.2 kg	1790040	
SWM 70	120 kg	90°	197 x 197 x 48 mm	2.7 kg	1790041	
VSWM 41	50 kg	30° - 275° continuously variable	197 x 197 x 95 mm	2.4 kg	1790050	
WM 90	14 kg	60°/90°	83 x 95 x 16 mm	0.2 kg	1790071	

* Holding force spec. based on application with 10 mm steel plate

MSWM and SSWM model ranges – permanent welding angle magnets for 30°, 45°, 60° and 90° holding angles

- ▶ For precise angular holding of round and flat iron workpieces
- ▶ Practical helper for welding and assembly work



MSWM 10

- ▶ Specially designed for small workpieces
- ▶ Scope of supply includes two miniature welding magnets



SSWM 20

- ▶ 20 kg holding force despite small size
- ▶ Very useful for typical applications
- ▶ Figure shows scope of delivery

Model	Holding force*	Angle	Dimensions	Weight	Art. no.
MSWM 10 **	10 kg	30°/60°/45°/90°	59 x 51 x 16 mm	0.3 kg	1790060
SSWM 20	40 kg	30°/60°/45°/90°	140 x 111 x 19 mm	0.5 kg	1790070

* Holding force spec. based on application with 10 mm steel plate** two magnets included in scope of supply, price is for scope of supply

MM model range – compact earth magnets with up to 50 kg holding force

- ▶ V attachment for safe holding on round and flat material surfaces
- ▶ Easy operation with on/off switch, also with gloves
- ▶ Metal swarf drops off directly after switching off the magnet
- ▶ Cable rotation through max. 360° possible



Model	Distance	Duty cycle	Holding force	Dimensions	Weight	Art. no.
MM 300	300 A	60 %	34 kg	50 x 50 x 64 mm	0.4 kg	1790072
MM 500	500 A	60 %	50 kg	50 x 70 x 64 mm	1.1 kg	1790073

* Holding force spec. based on application with 10 mm steel plate ** two magnets included in scope of supply, price is for scope of supply

MHA model range – magnetic holding stops for positioning smaller workpieces in tack welding

- ▶ For use on metal profiles, such as round materials, flat steel or square tubes
- ▶ MHA 111 made of die cast alum. for precise work
- ▶ Adjustable holding stops vertically or horizontally position and fix the workpiece



MHA 100 -

Fig. shows the scope of delivery

MHA 111 -

Fig. shows the scope of delivery

MVS set – Magnetic V clamping attachment

- ▶ For holding, positioning and machining steel workpieces
- ▶ 4 magnets per clamping attachment
- ▶ For use with round, flat and square materials in low-load applications



Model	Holding force	Dimensions	Weight	Art. no.
MHA 100	8.0 kg	100 x 76 x 32 mm	0.2 kg	1790074
MHA 111	8.0 kg	111 x 73 x 38 mm	0.25 kg	1790075
MVS set	8.0 kg	60 x 35 x 30 (2x)/60 x 35 x 30 (2x) mm	0.4 (total) kg	1790076